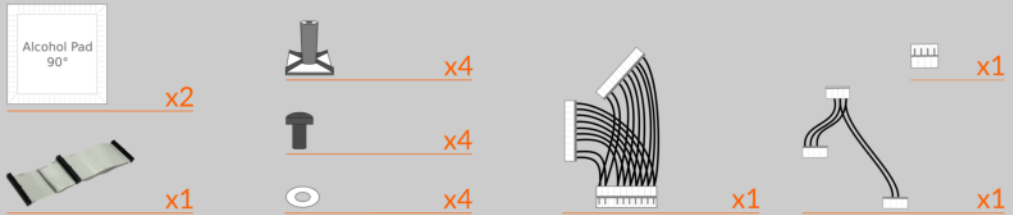


# PinSound

pinsound.org • WPC-95 installation

## Bally Williams WPC 95 kit

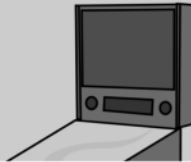
### KIT



### TOOLS



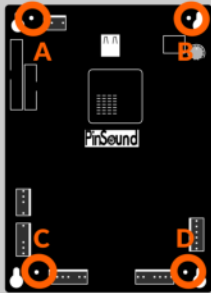
### 1 OFF







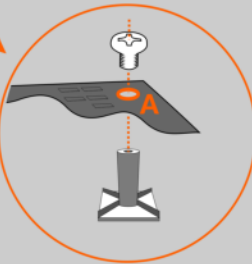
### 2 OPEN BACKBOX



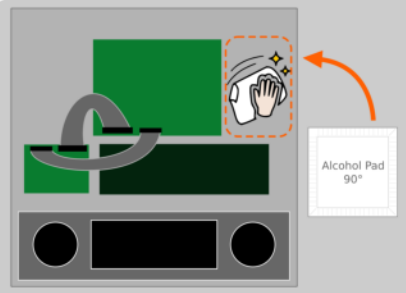
### 3 SCREW ADHESIVE MOUNT FEET



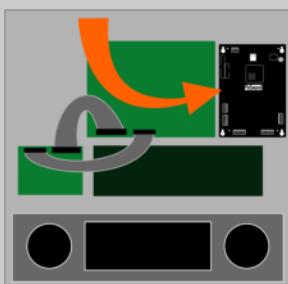
- ✓ A + 
- ✓ B + 
- ✓ C + 
- ✓ D + 



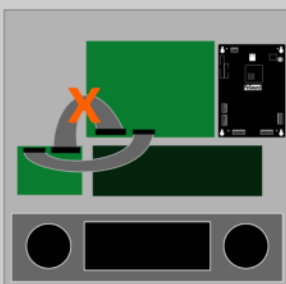
### 4 CLEAN



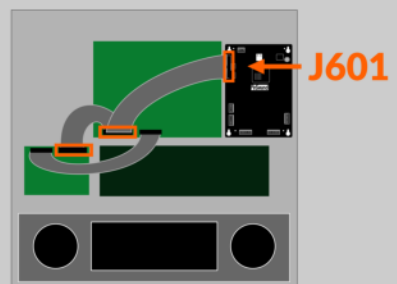
### 5 STICK BOARD



### 6 REMOVE RIBBON

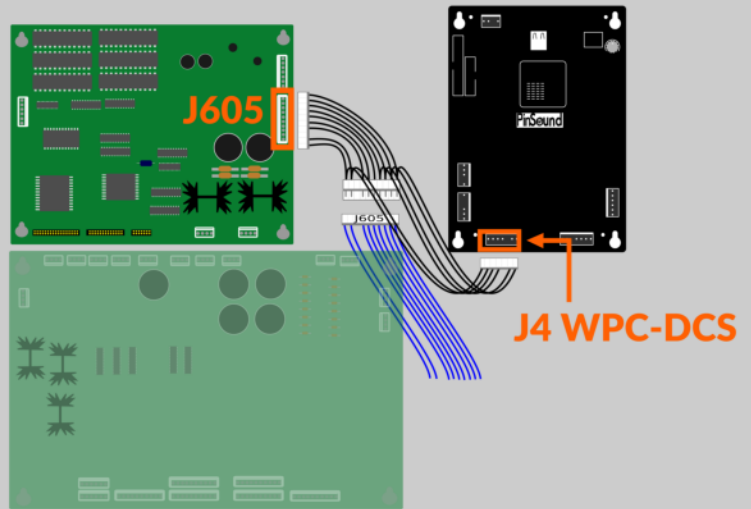


### 7 INSTALL NEW RIBBON



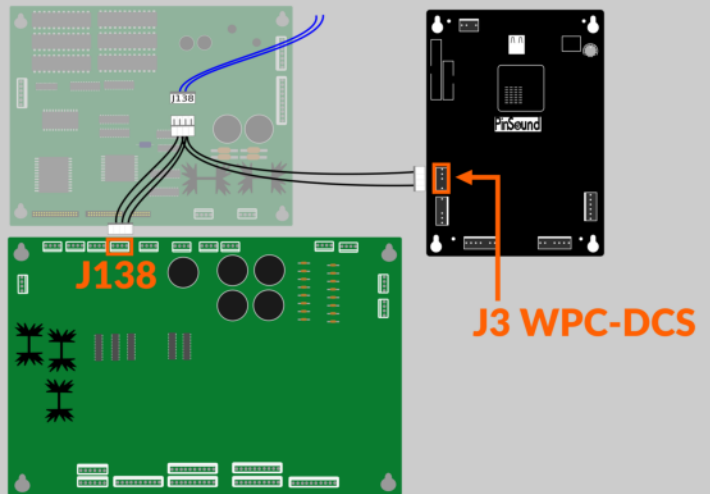
## 8 CONNECT

- ① Remove J605 connector
- ② Connect splitter to J605 (Audio Video board)
- ③ Connect splitter to J4 (PinSound board)
- ④ Connect back J605 to splitter



## 9 CONNECT

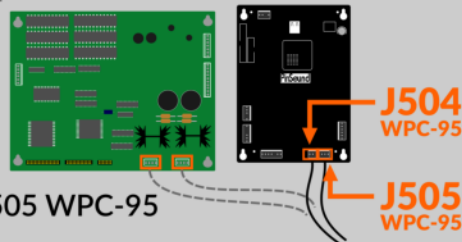
- ① Remove J138 connector
- ② Connect splitter to J138 (Driver board)
- ③ Connect splitter to J3 (PinSound board)
- ④ Connect back J138 to splitter (use Z-connector if needed)



## 10 CONNECT

Audio Video Board  
J504 + J505  
(Speakers)

PinSound Board  
J504 WPC-95 + J505 WPC-95  
(Speakers)



## 11 LOAD USB

