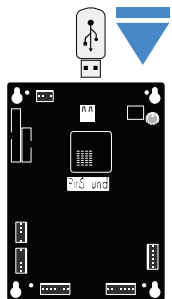


## 9 UPDATE YOUR PINSOUND BOARD



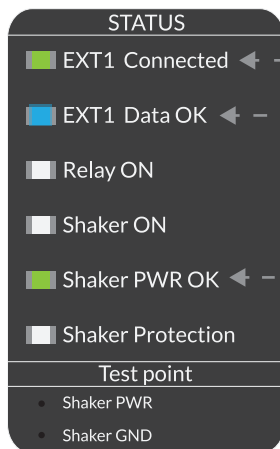
Update the firmware of your PinSound board

Go to [www.pinsound.org/help](http://www.pinsound.org/help)

*Be sure to play with the latest firmware update!*

## 10 CHECK LED STATUS

Turn your **machine ON**, wait for the system to load  
and check Motion Control LEDs



Green

Glowing blue

Green

Full LED status information on [www.pinsound.org/help](http://www.pinsound.org/help)

## 11 ENJOY!

Have fun with your new shaker!

## NEED HELP?

Installation video  
Firmw are update  
Guide  
Q&A

[www.pinsound.org/help](http://www.pinsound.org/help)



# PinSound MotionControl

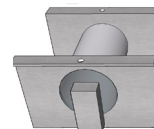


## Shaker kit for Bally Williams WPC 89/DCS

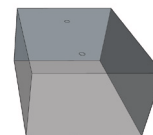
### KIT CONTENT



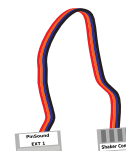
Motion Control



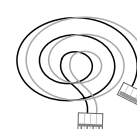
Shaker motor



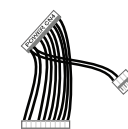
Plastic cover



Control wire



Shaker power



Power splitter



X 4



X 4



X 1



X 4



X 4



X 2

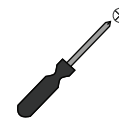


X 4

### TOOLS



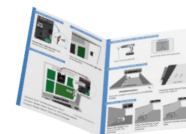
7/32" 5.5 mm drill bit



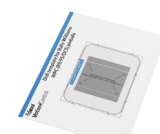
Screwdriver



Hammer

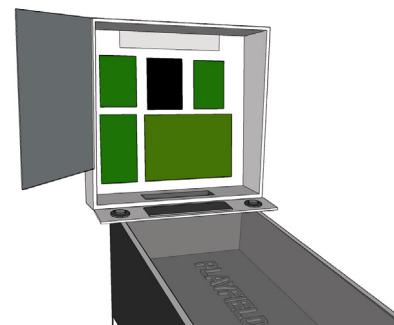


Installation manual



Drill template

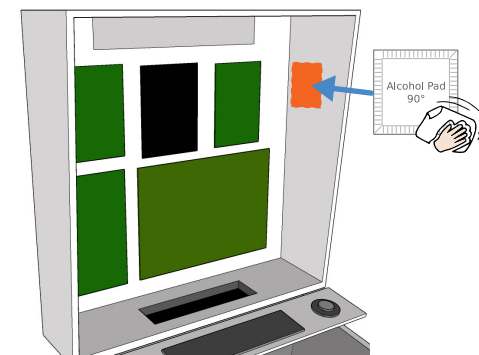
## 1 PREPARATION



⚠ Turn your machine **OFF**

- Open backbox

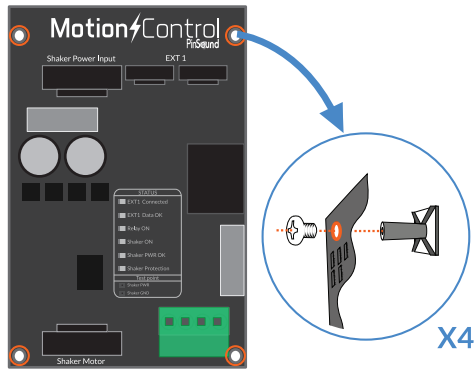
## 2 CLEAN INSTALLATION AREA



We recommend to install the board on  
the **inner right side** of the backbox

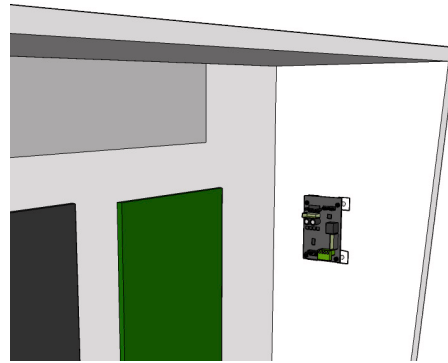
**Clean the area with the alcohol pad**

### 3 MOUNT ADHESIVE FEET



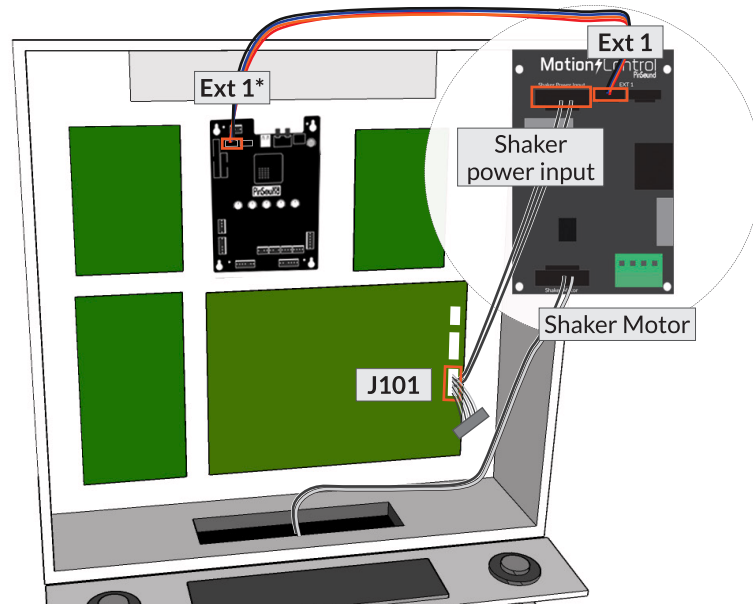
Mount the 4 adhesive feet and secure them with screws

### 4 INSTALL MOTION CONTROL



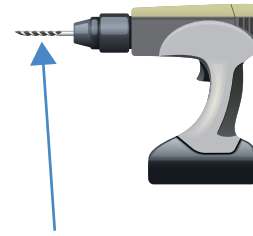
Stick the board to the inner right side of the backbox

### 5 CONNECT MOTION CONTROL

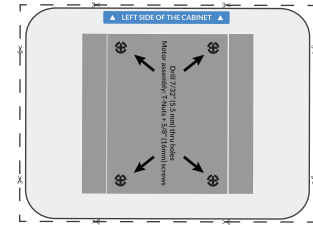


- Connect "Ext1" to PinSound board "Ext1" (\* "Extension" on PinSound v1)
- Connect "Shaker Power Input" to J101 with the splitter
- Connect "Shaker Motor" wire and lay it through

### 6 PREPARE THE DRILL AND THE TEMPLATE

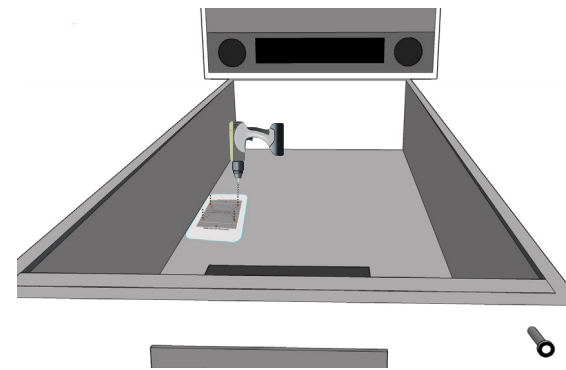


7/32" (5.5mm) drill bit



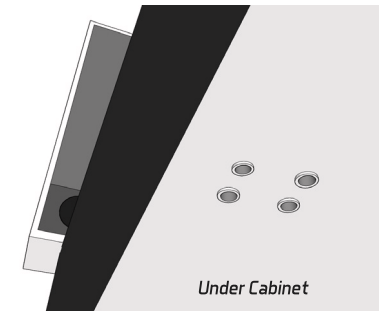
Cut off the WPC drill template

### 7 PREPARE THE SHAKER FITTING



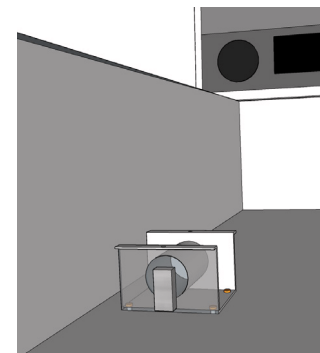
Place the template as indicated\* and drill the 4 holes

(\* you may have to choose another position to fit in your cabinet)

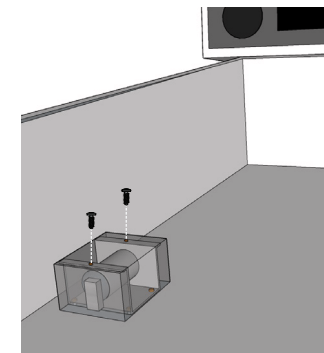


Hammer down the 4 T-Nuts under the cabinet

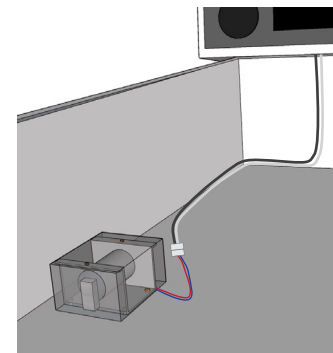
### 8 INSTALL THE SHAKER



Place the shaker and secure it with the 4 screws



Place the shaker cover and secure it with the 2 screws



Connect shaker power wire