

PinSound MotionControl

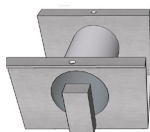


Shaker kit for DataEast

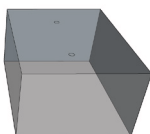
KIT CONTENT



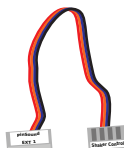
Motion Control



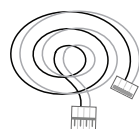
Shaker motor



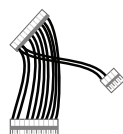
Plastic cover



Control wire



Shaker power



Power splitter



X 4

X 4



X 1



X 4

X 4

X 2

X 4

TOOLS



7/32" 5.5 mm drill bit



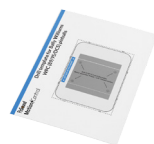
Screwdriver



Hammer

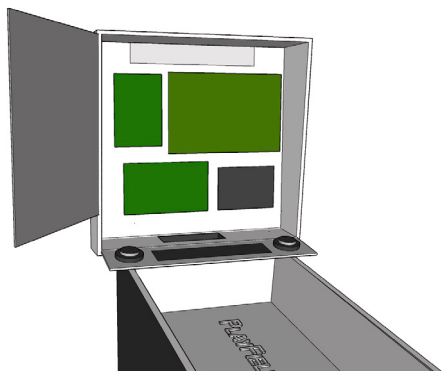


Installation manual



Drill template

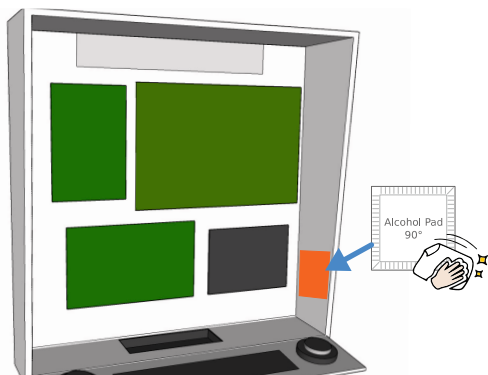
1 PREPARATION



⚠ Turn your machine **OFF**

- Open backbox

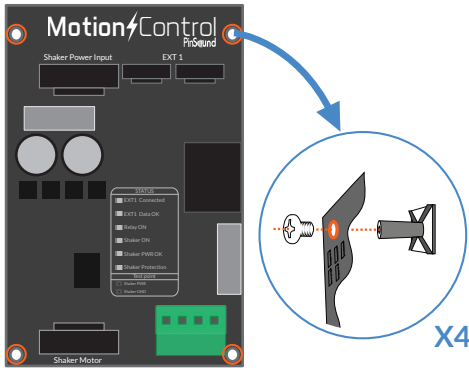
2 CLEAN INSTALLATION AREA



We recommend to install the board on the **bottom right part** of the backbox

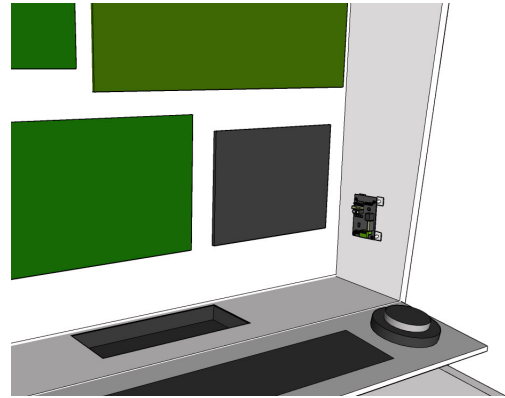
Clean the area with the alcohol pad

3 MOUNT ADHESIVE FEET



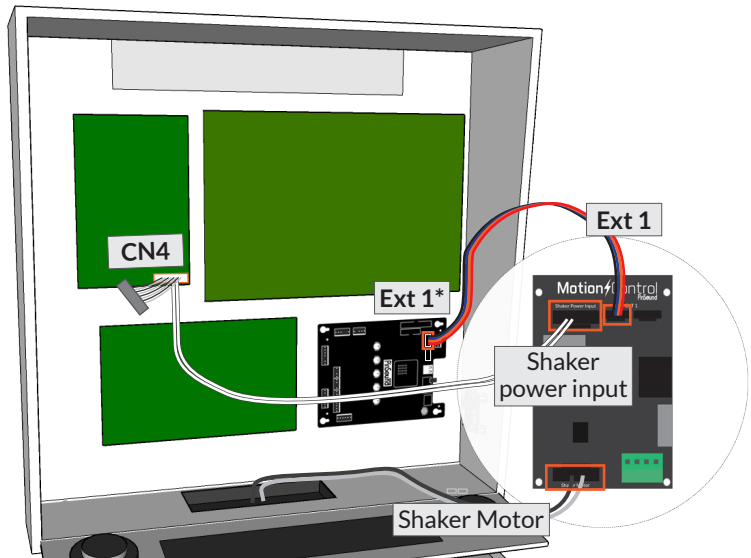
Mount the 4 adhesive feet
and secure them with screws

4 INSTALL MOTION CONTROL



Stick the board to the **bottom right**
part of the backbox

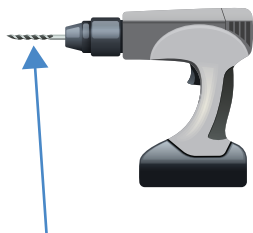
5 CONNECT MOTION CONTROL



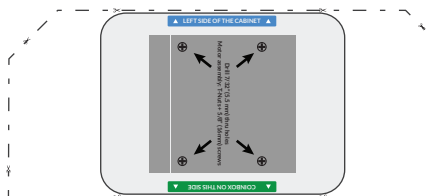
- Connect "Ext1" to PinSound board "Ext1"
- Connect "Shaker Power Input" to "CN4" with the splitter
- Connect "Shaker Motor" wire and lay it through

(* "Extension" on PinSound v1)

6 PREPARE THE DRILL AND THE TEMPLATE

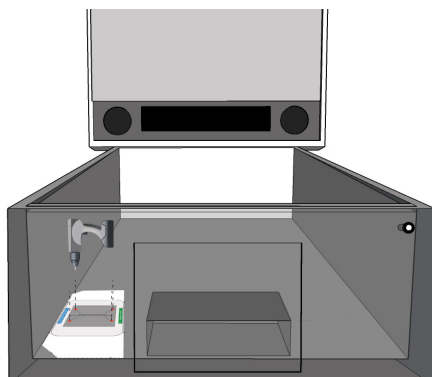


7/32" (5.5mm) drill bit



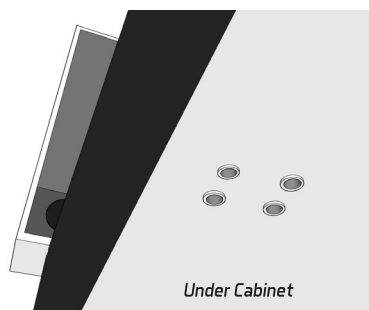
Cut off the DataEast drill template

7 PREPARE THE SHAKER FIXATION



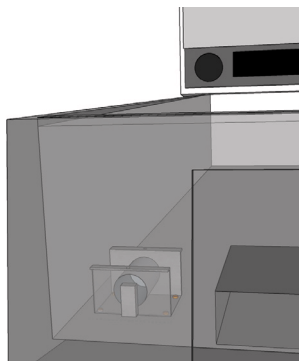
Place the template as indicated* and **drill the 4 holes**

(* you may have to choose another position to fit in your cabinet)

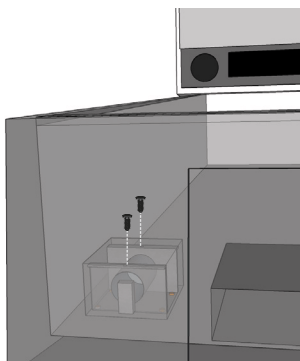


Hammer down the 4 T-Nuts under the cabinet

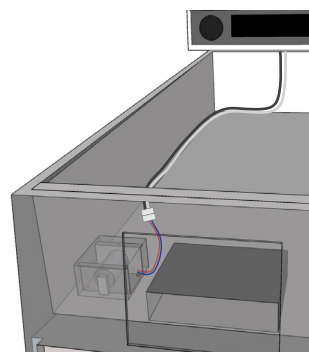
8 INSTALL THE SHAKER



Place the shaker and secure it with the **4 screws**

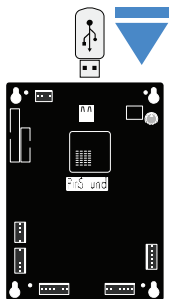


Place the shaker cover and secure it with the **2 screws**



Connect shaker power wire

9 UPDATE YOUR PINSOUND BOARD



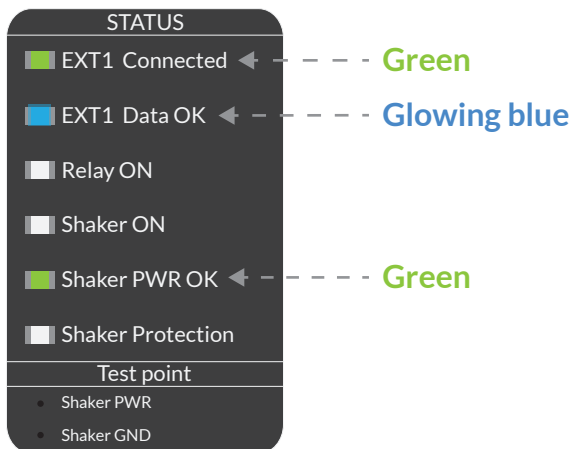
Update the **firmware** of your PinSound board

Go to www.pinsound.org/help

Be sure to play with the latest firmware update!

10 CHECK LED STATUS

Turn your **machine ON**, wait for the system to load
and check Motion Control LEDs



Full LED status information on www.pinsound.org/help

11 ENJOY!

Have fun with your new shaker!

NEED HELP?

Installation video
Firmware update
Guide
Q&A

www.pinsound.org/help

