

# PinSound Motion Control

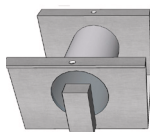


## Shaker kit for Sega / Stern Whitestar

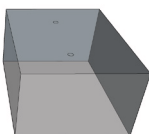
### KIT CONTENT



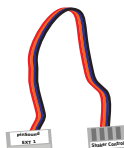
Motion Control



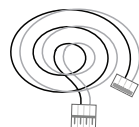
Shaker motor



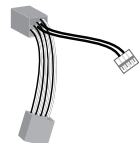
Plastic cover



Control wire



Shaker power



Power splitter



X 4

X 4



X 1



X 4

X 4

X 2

X 4

### TOOLS



7/32" 5.5 mm drill bit



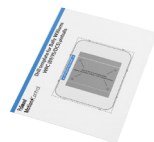
Screwdriver



Hammer



Installation manual



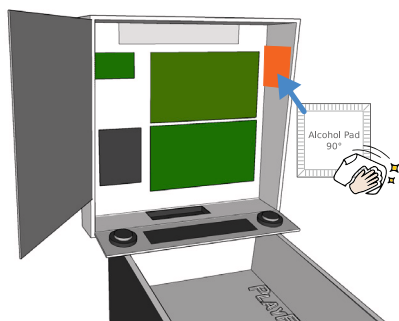
Drill template

### 1 PREPARE AND CLEAN INSTALLATION AREA

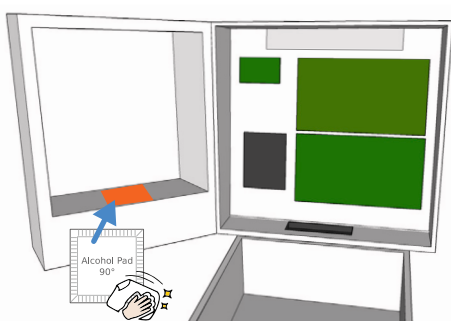
⚠ Turn your machine **OFF**

- Open backbox
- Clean the installation area with alcohol pad

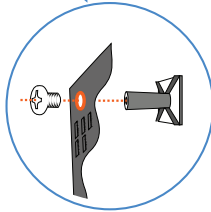
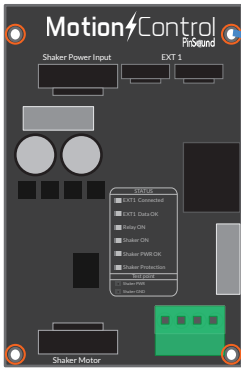
#### STERN Whitestar pinball



#### SEGA pinball



## 2 MOUNT ADHESIVE FEET

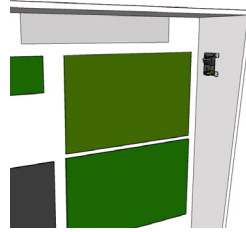


X4

Mount the 4 adhesive feet and secure them with screws

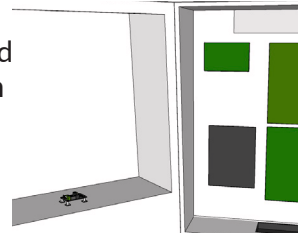
## 3 INSTALL MOTION CONTROL

STERN Whitestar pinball



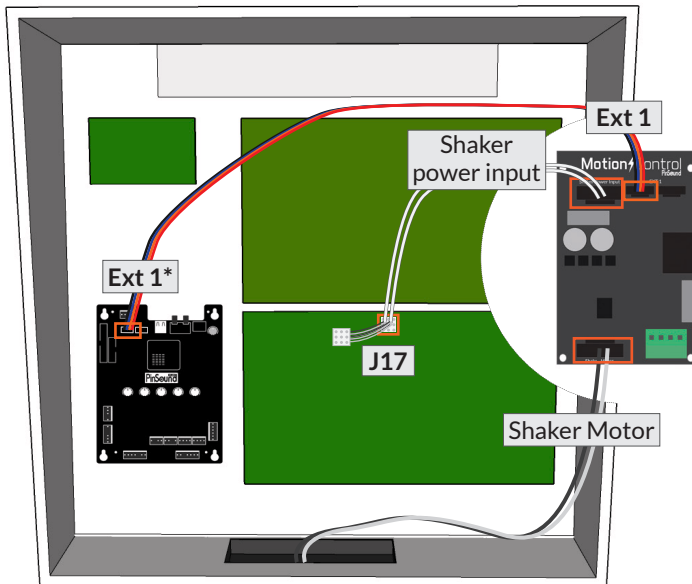
Stick the board to the **top right side** of the backbox

SEGA pinball



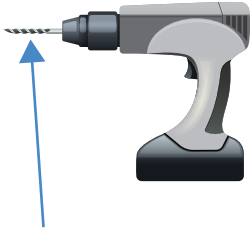
Stick the board on the **bottom inner part** of the door

## 4 CONNECT MOTION CONTROL

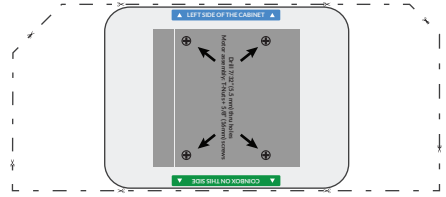


- Connect "Ext1" to PinSound board "Ext1" (\* "Extension" on PinSound v1)
- Connect "Shaker Power Input" to "J17" with the splitter
- Connect "Shaker Motor" wire and lay it through

## 5 PREPARE THE DRILL AND THE TEMPLATE

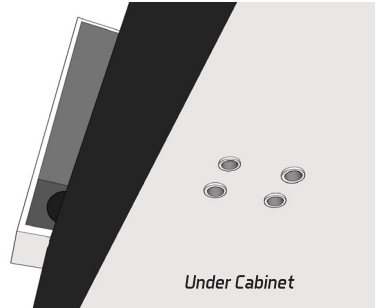
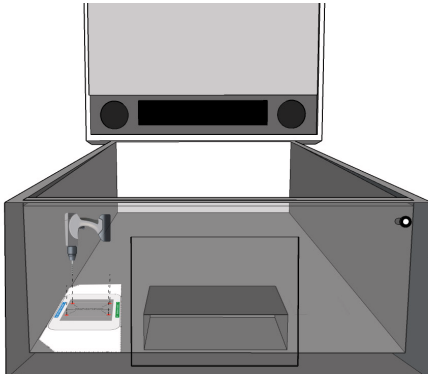


7/32" (5.5mm) drill bit



Cut off the Sega / Stern Whitestar drill template

## 6 PREPARE THE SHAKER FIXATION

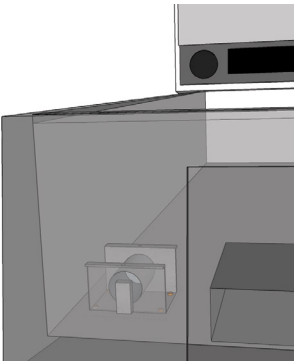


Place the template as indicated\* and drill the 4 holes

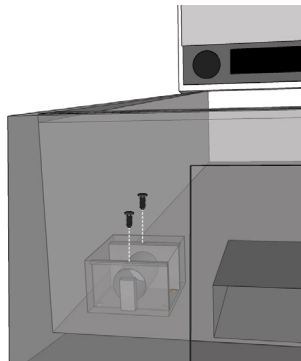
(\* you may have to choose another position to fit in your cabinet)

Hammer down the 4 T-Nuts under the cabinet

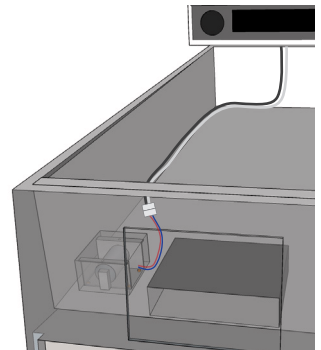
## 7 INSTALL THE SHAKER



Place the shaker and secure it with the 4 screws

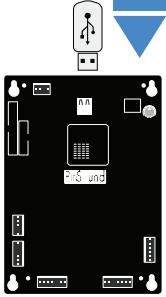


Place the shaker cover and secure it with the 2 screws



Connect shaker power wire

## 8 UPDATE YOUR PINSOUND BOARD



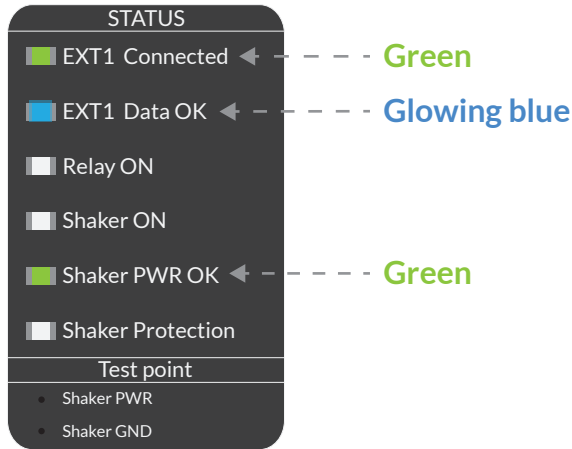
Update the firmware of your PinSound board

Go to [www.pinsound.org/help](http://www.pinsound.org/help)

*Be sure to play with the latest firmware update!*

## 9 CHECK LED STATUS

Turn your **machine ON**, wait for the system to load  
and check Motion Control LEDs



Full LED status information on [www.pinsound.org/help](http://www.pinsound.org/help)

## 10 ENJOY!

Have fun with your new shaker!

## NEED HELP?

Installation video  
Firmware update  
Guide  
Q&A

[www.pinsound.org/help](http://www.pinsound.org/help)

