

PinSound

WPC95 Audio/Video



0 713091 605176

ps-wpc95-audio-video

Bally Williams WPC-95

Audio/Video replacement kit

KIT CONTENT



Ribbon cable



Mounting set (x2)



Power A wiring



Installation manual



Z-connector

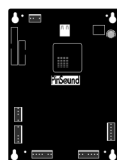


Power B wiring

REQUIRED



DMDLux controller



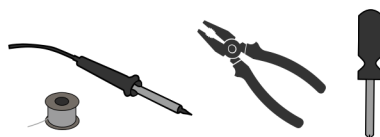
PinSound sound board

1 UNPLUG

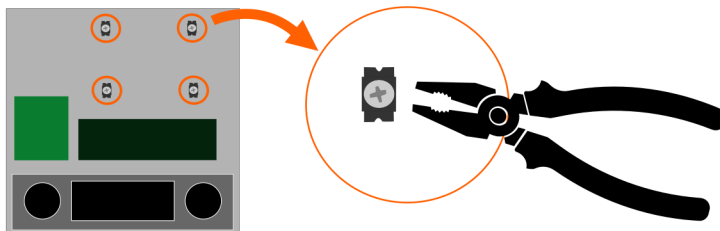
⚠ Turn your machine **OFF**

- Open backbox
- Disconnect audio/video board

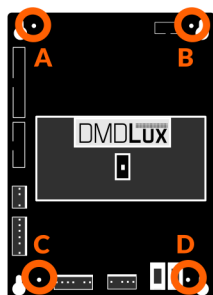
TOOLS



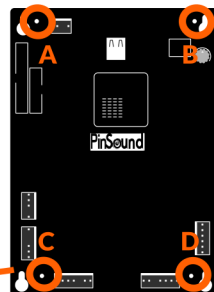
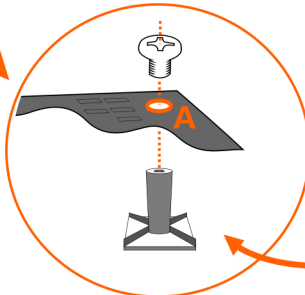
2 REMOVE ORIGINAL BOARD SUPPORTS



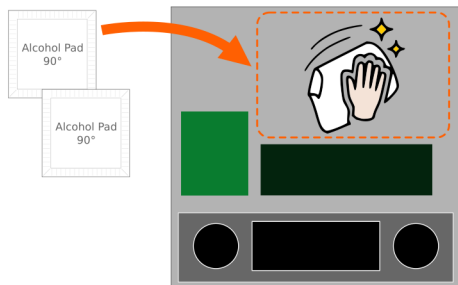
3 SCREW ADHESIVE MOUNT FEET



- ✓ A +
- ✓ B +
- ✓ C +
- ✓ D +



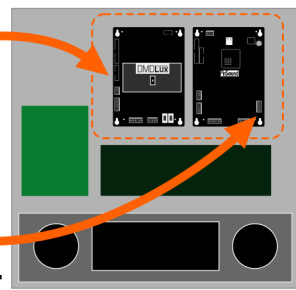
4 CLEAN THE SURFACE



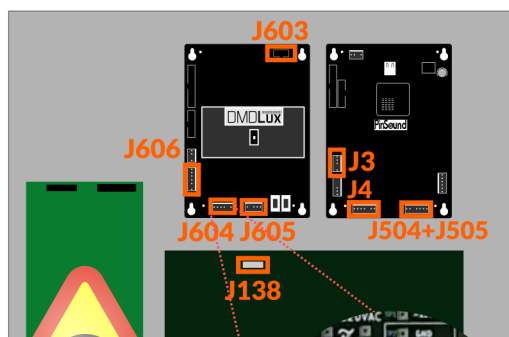
5 STICK THE BOARDS

① **DMDLux controller on the LEFT**

② **PinSound sound board on the RIGHT**



6 CONNECT CABLES



DMDLux

- J603 (DMD ribbon)
- J604
- J605 (splitter)
- J606

PinSound sound board

- J3
- J4
- J504 + J505 (speakers)

DRIVER BOARD

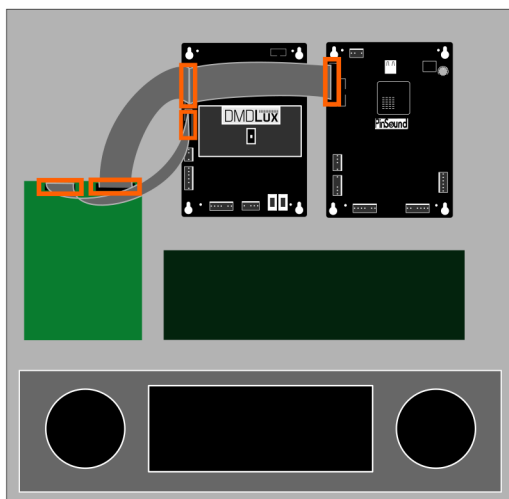
- J138 (splitter, use Z-connector if needed)



this connector must be on J604
→ **check wires colors**

If inverted with J4 on the PinSound sound board: **not under warranty!**

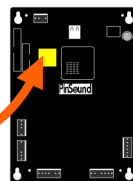
7 CONNECT RIBBON CABLES



8 CHECK LED STATUS

PinSound sound board

Status LED
at startup: 3 white blinks



DMDLux sound board

7 green LEDs lit

