

PinSound

WPC-95 Adapter



0 713091 605015
ps-adapter-wpc-95

KIT



x2



x1



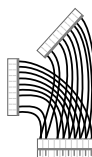
x4



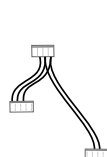
x4



x4



x1

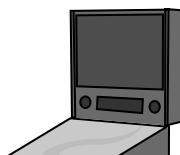


x1

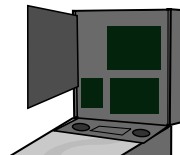
x1

TOOLS

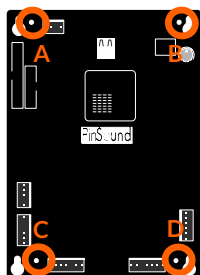
1 OFF



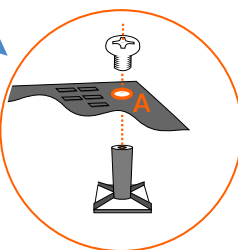
2 OPEN BACKBOX



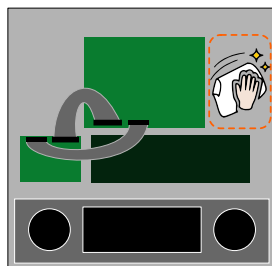
3 SCREW ADHESIVE MOUNT FEET



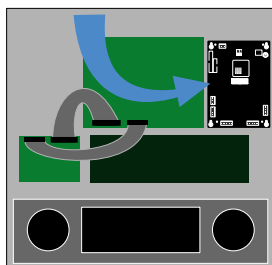
- ✓ A +
- ✓ B +
- ✓ C +
- ✓ D +



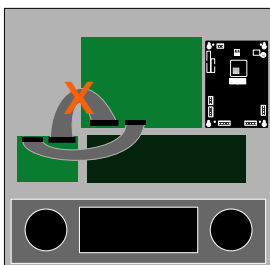
4 CLEAN



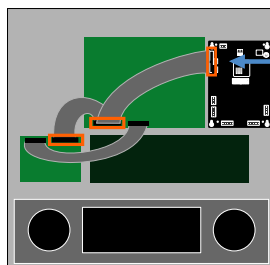
5 STICK BOARD



6 REMOVE RIBBON



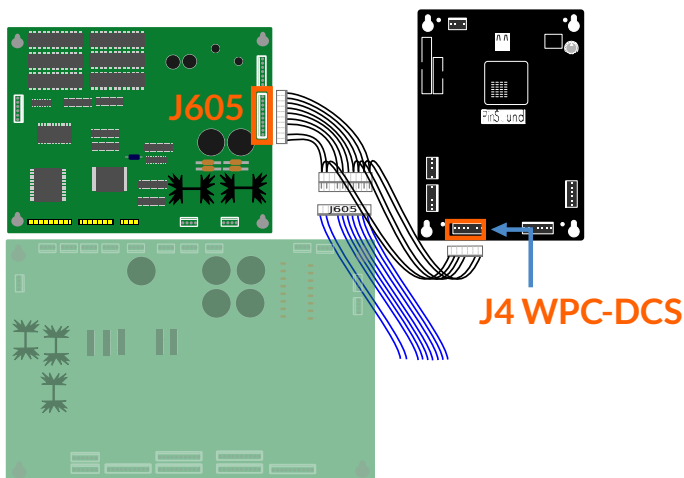
7 INSTALL NEW RIBBON



J601

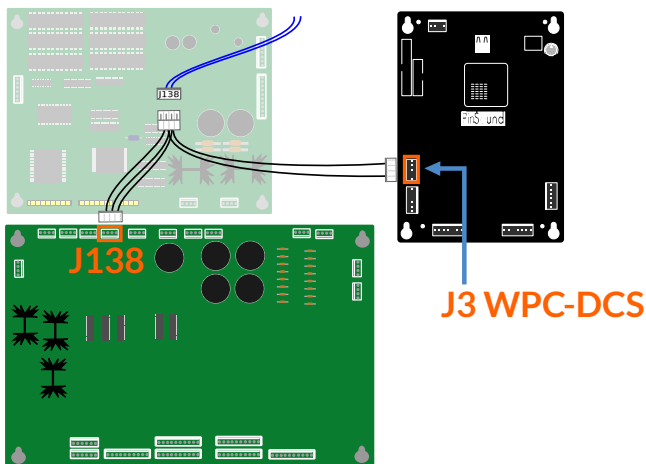
8 CONNECT

- ① Remove J605 connector
- ② Connect splitter to J605 (Audio Video board)
- ③ Connect splitter to J4 (PinSound board)
- ④ Connect back J605 to splitter



9 CONNECT

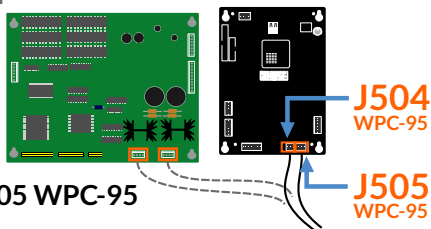
- ① Remove J138 connector
- ② Connect splitter to J138 (Driver board)
- ③ Connect splitter to J3 (PinSound board)
- ④ Connect back J138 to splitter (use Z-connector if needed)



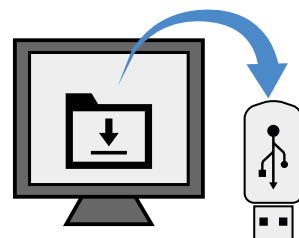
10 CONNECT

Audio Video Board
J504 + J505
(Speakers)

PinSound Board
J504 WPC-95 + J505 WPC-95
(Speakers)



11 LOAD USB



NEED HELP?

www.pinsound.org/help

