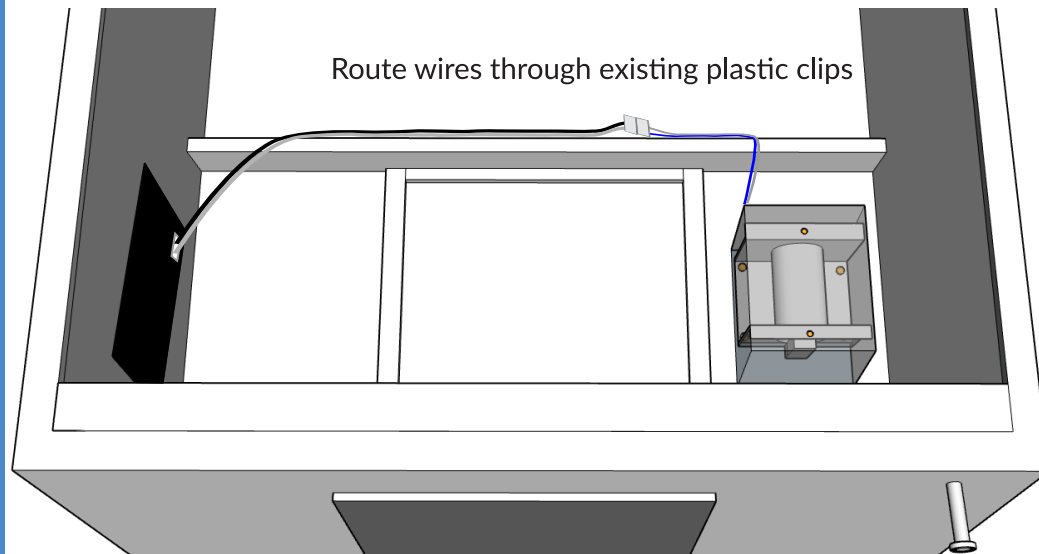


## 6 ROUTE WIRES



## 7 ENJOY!

Have fun with your new shaker!

### NEED HELP?

Installation video  
Firmware update  
Guide  
Q&A

[www.pinsound.org/help](http://www.pinsound.org/help)

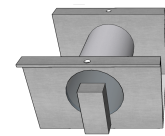


# PinSound MotionControl

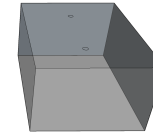


## Shaker kit for Stern SPIKE 1&2

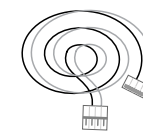
### KIT CONTENT



Shaker motor



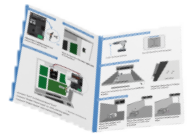
Plastic cover



Shaker power



Capacitor kit



Installation manual

⌀ X 4   ⌀ X 2

### TOOLS

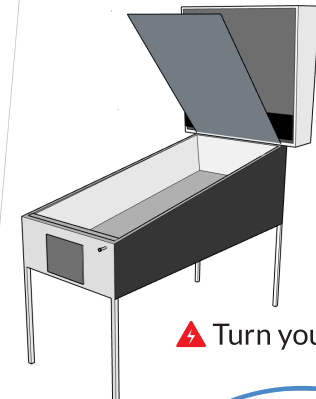


Phillips screwdriver



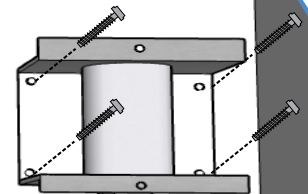
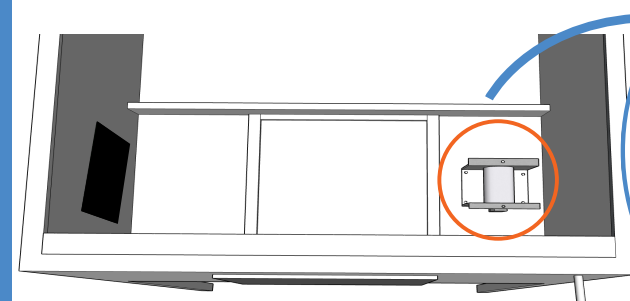
1/4" nut driver

### 1 LIFT THE PLAYFIELD



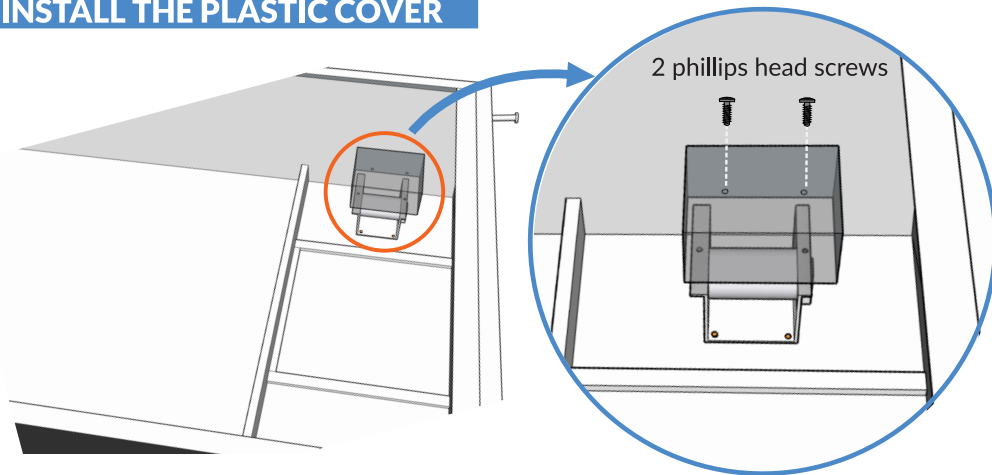
⚠ Turn your machine **OFF**

### 2 INSTALL THE SHAKER MOTOR



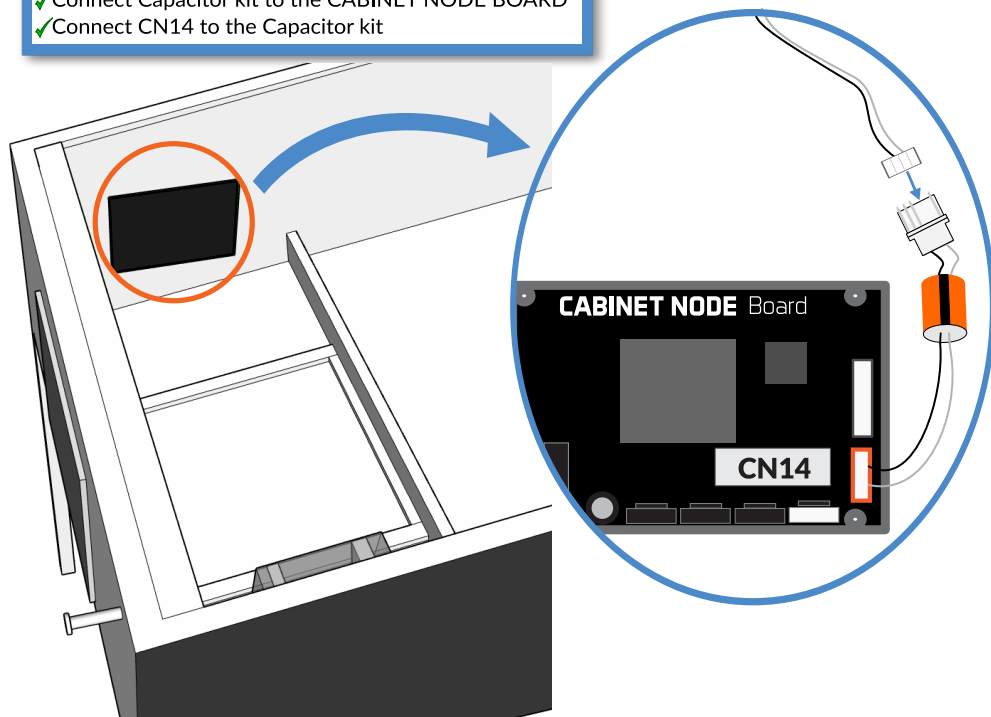
4 hex head screws

### 3 INSTALL THE PLASTIC COVER



### 4 INSTALL CAPACITOR KIT ON THE CABINET NODE BOARD

- ✓ Disconnect CN14 from the CABINET NODE BOARD
- ✓ Connect Capacitor kit to the CABINET NODE BOARD
- ✓ Connect CN14 to the Capacitor kit



### 5 CONNECT THE SHAKER MOTOR CABLE

