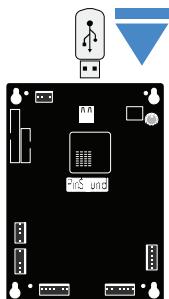


9 UPDATE YOUR PLUS/NEO SOUND BOARD



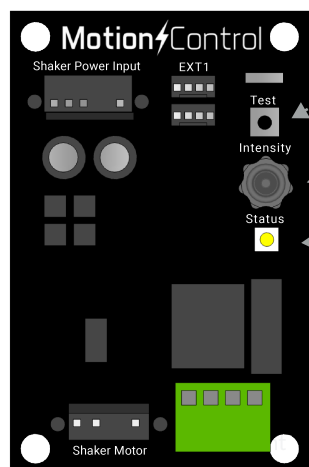
Update the firmware of your PLUS/NEO sound board

Go to www.pinsound.org/support

Be sure to play with the latest firmware update!

10 CHECK LED STATUS

Turn your machine **ON**, wait for the system to load



Press test button to **check the shaker motor**

Adjust the shaker motor intensity

LED status:

- Running
- Check Power
- Check Ext1
- Protection

Full LED status information on

www.pinsound.org/support

11 ENJOY!

Have fun with your new shaker!

NEED HELP?

Installation video, Firmware update, Guide, Q&A

www.pinsound.org/support



PinSound Motion Control

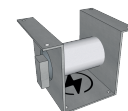


Shaker kit for Bally Williams WPC 89/DCS for PLUS/NEO/XL

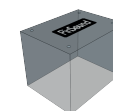
KIT CONTENT



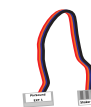
Motion Control



Shaker motor



Plastic cover



Control wire



Shaker power



Power splitter



X 4



X 4



X 1



X 4



X 4



X 4



X 4

TOOLS



7/32" 5.5 mm drill bit

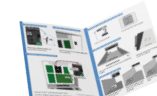


Screwdriver & Hammer

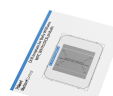
REQUIRED



PLUS/NEO Sound board

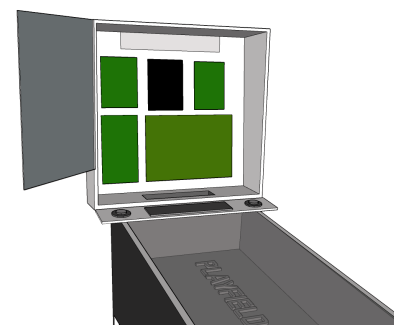


Installation manual



Drill template

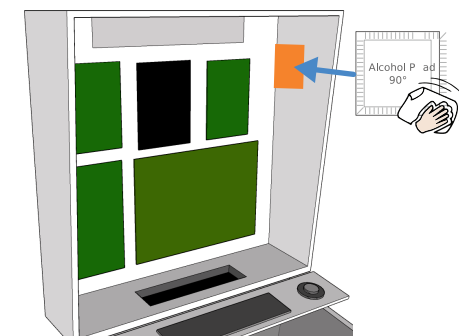
1 PREPARATION



⚠ Turn your machine **OFF**

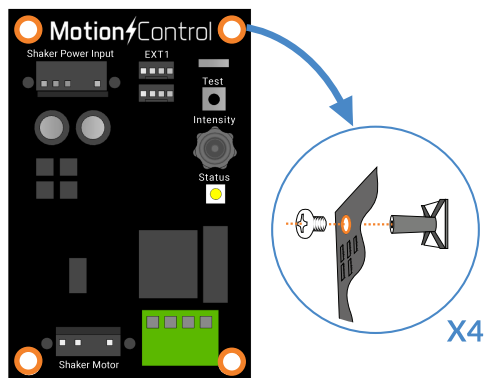
- Open backbox

2 CLEAN INSTALLATION AREA



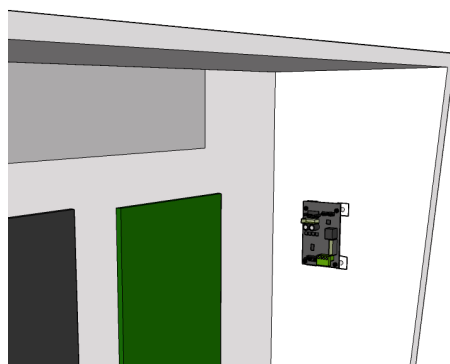
We recommend to install the board on the **inner right side** of the backbox.
Clean the area with the **alcohol pad**

3 MOUNT ADHESIVE FEET



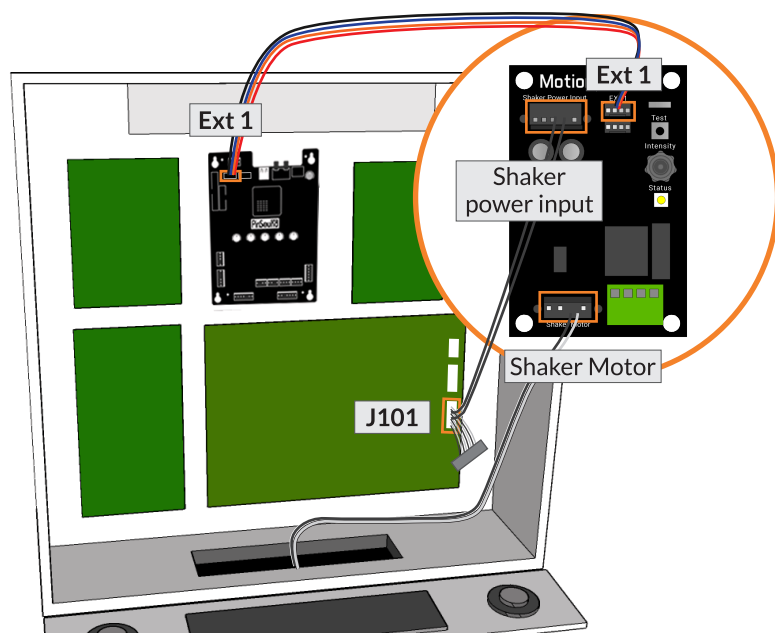
Mount the 4 adhesive feet and secure them with screws

4 INSTALL MOTION CONTROL



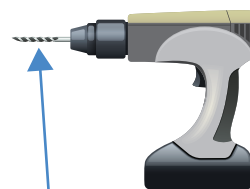
Stick the board to the inner right side of the backbox

5 CONNECT MOTION CONTROL

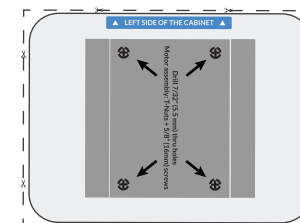


- Connect «Ext1» to PLUS/NEO Sound board «Ext1»
- Connect «Shaker Power Input» to J101 with the splitter
- Connect «Shaker Motor» wire and lay it through

6 PREPARE THE DRILL AND THE TEMPLATE

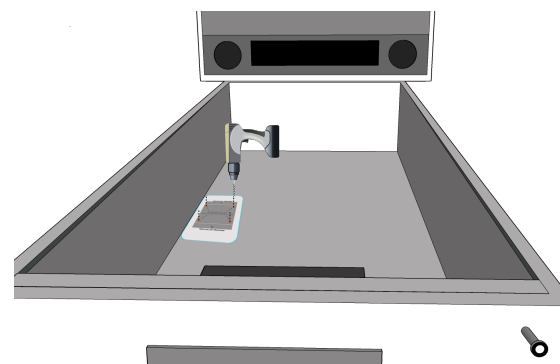


7/32" (5.5mm) drill bit



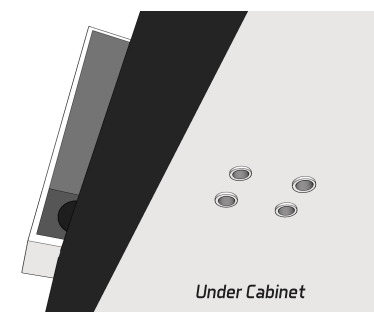
Cut off the WPC drill template

7 PREPARE THE SHAKER FITTING



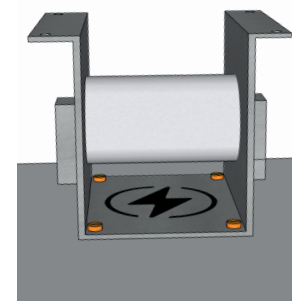
Place the template as indicated* and drill the 4 holes

(* you may have to choose another position to fit in your cabinet)

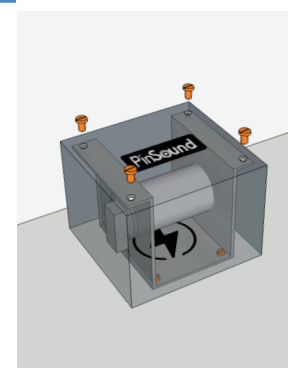


Hammer down the 4 T-Nuts under the cabinet

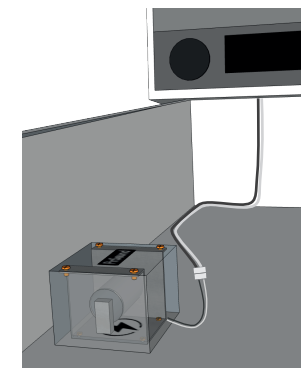
8 INSTALL THE SHAKER



Place the shaker and secure it with the 4 screws



Place the shaker cover and secure it with the 4 screws



Connect shaker power wire