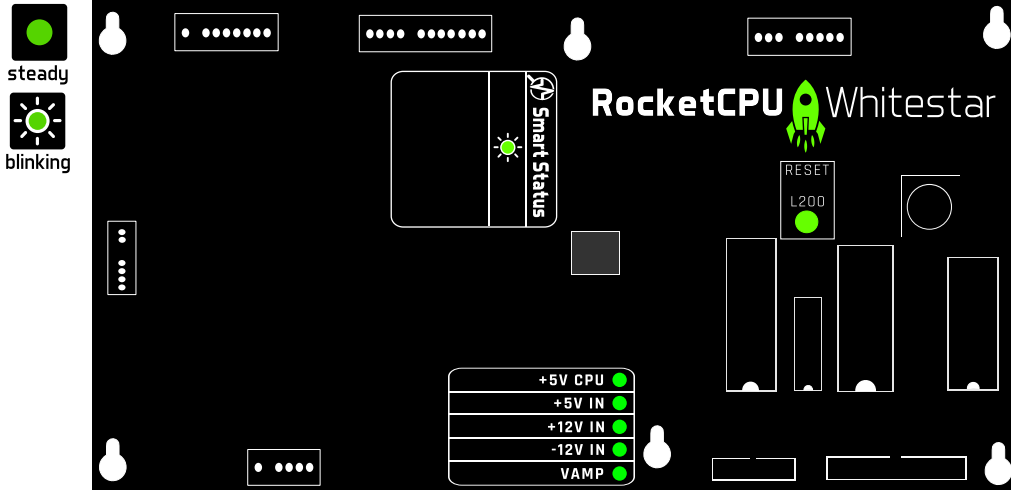


13 TURN ON & CHECK STATUS



14 ENJOY!

Have fun with your new CPU!

NEED HELP?

- Installation video
- Firmware update
- Guide
- Q&A

www.pinsound.org/support



RECOMMENDED PRODUCTS FOR ROCKETCPU WHITESTAR

SonataSPK

ULTRA
Headphones Station

MotionControl
Shaker Kit

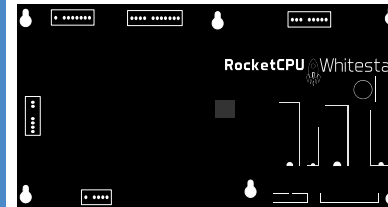


RocketCPU Whitestar

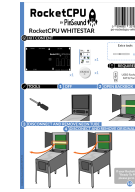
BY PinSound



KIT CONTENT



x1



x1



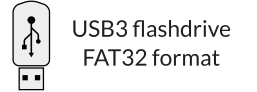
x1

Extra tools



x1

**REQUIRED
UNLESS READY TO PLAY**

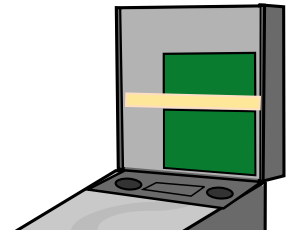
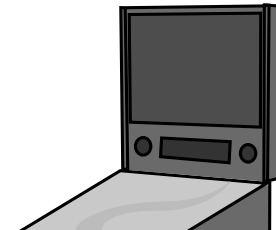


USB3 flashdrive
FAT32 format

TOOLS

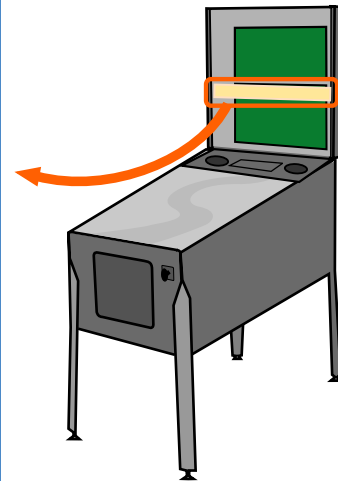
1 OFF

2 OPEN BACKBOX



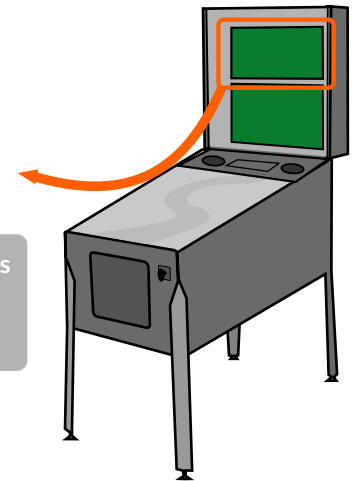
3 REMOVE FLUORESCENT TUBE

4 REMOVE ORIGINAL CPU



If your RocketCPU is
"Ready To Play"
please go to step

8

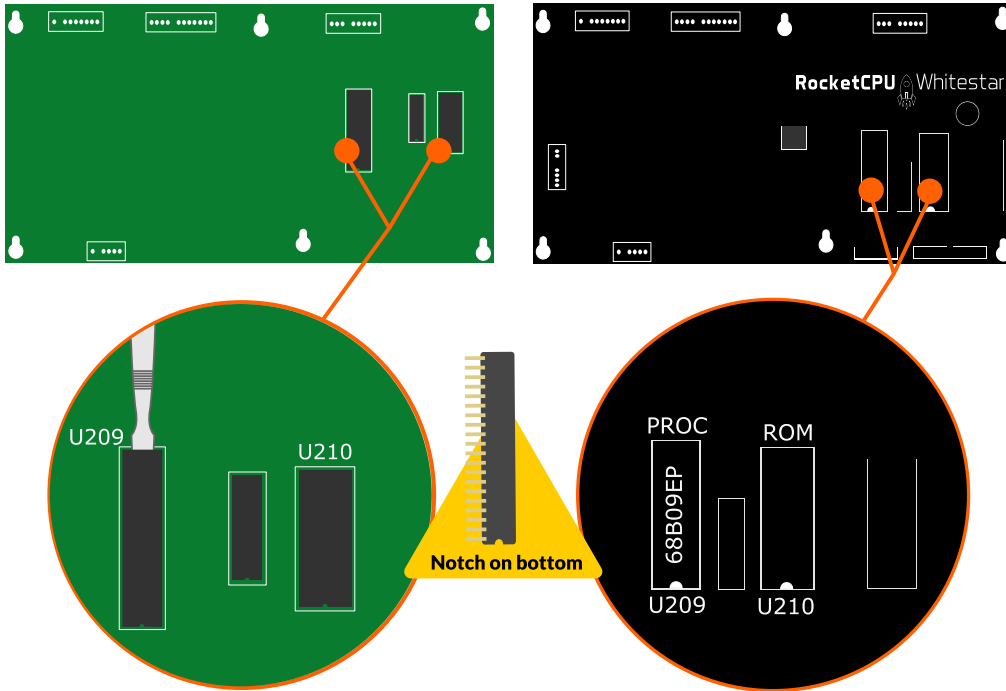


! WARNING

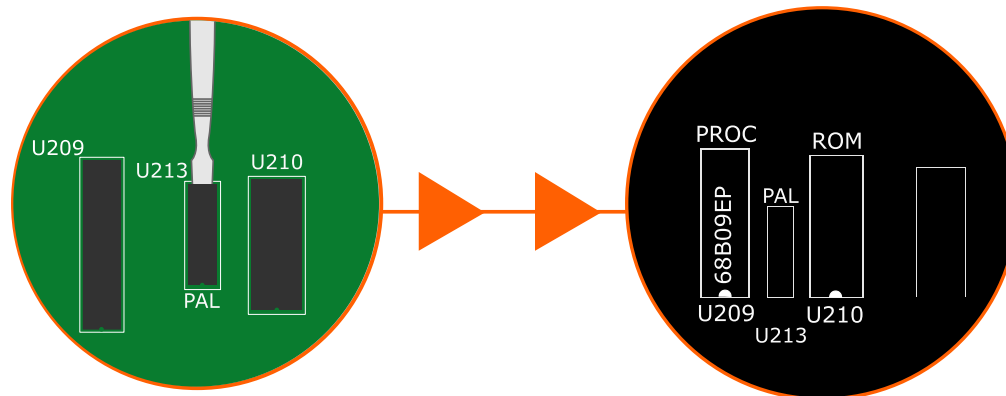
The following steps need to be followed carefully. Any failures or consequences are at your own risk and liability. In no case does the warranty cover any damages or indirect damages caused by a careless installation or handling mistake.

Please contact a technician if you do not feel confident doing it yourself.

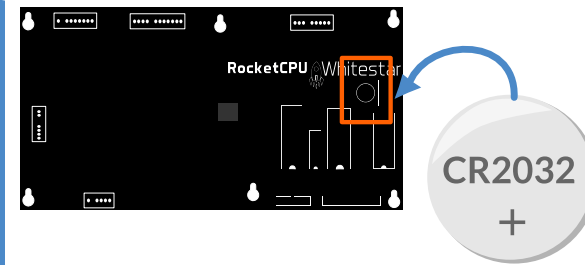
5 TRANSFER U209 AND U210



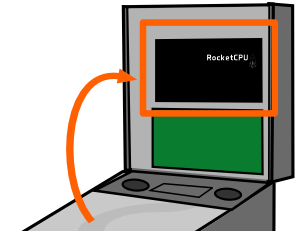
6 TRANSFER PAL U213 (UNLESS SOLDERED ON BOARD)



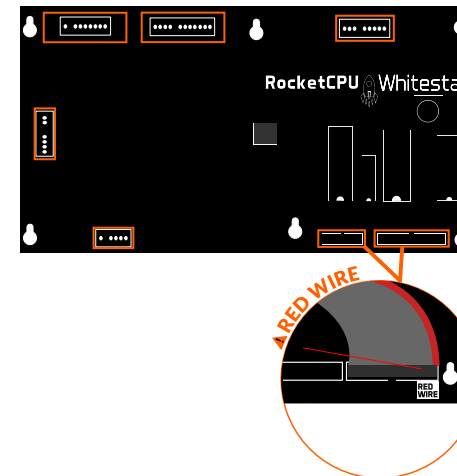
7 INSERT BATTERY



8 REINSTALL ROCKETCPU



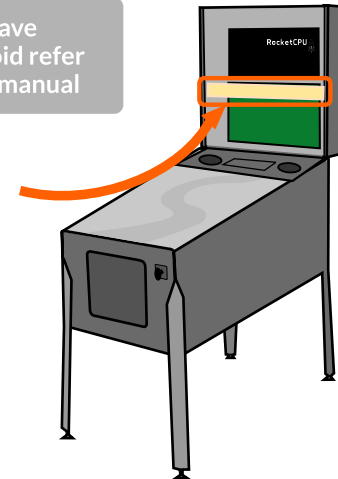
9 CONNECT



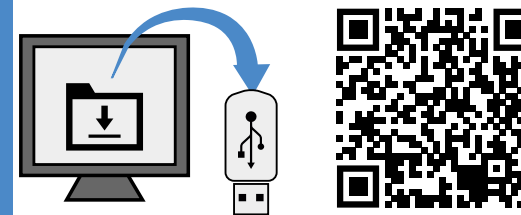
Ribbon cables must be positioned according to the "RED WIRE" location

10 REINSTALL FLUORESCENT TUBE

If you have BrighterVoid refer to its own manual



11 LOAD USB DRIVE



12 CONNECT USB DRIVE

